


**This MotoCAP safety rating applies to:**

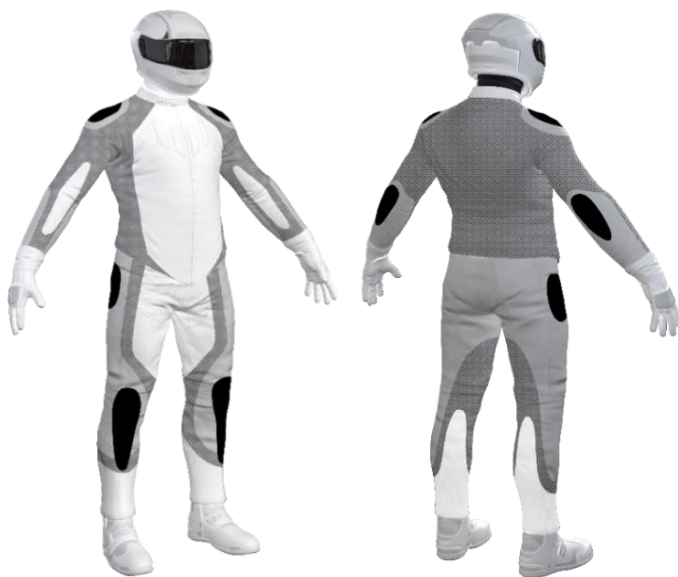
Brand	MotoDry
Model	Thermo
Type	Pants - Textile
Date purchased	20 January 2024
Sizes tested	L and XL
Test garment gender	Male
Style	All Purpose
RRP	\$199.95

Test Results Summary	Rating	Score
MotoCAP Protection Rating	★	13.6
Abrasion	1/10	0.35
Burst	10/10	1183
Impact	1/10	0.0
MotoCAP Breathability Rating	✎	0.066
Moisture Vapour Resistance	-	194.5
Thermal Resistance	-	0.214
Water resistance	8/10	4.4

This garment is fitted with impact protectors for the knees. Pockets are provided at the hips for fitting aftermarket impact protectors. The foam pads present in hip armour pockets were fillers and not tested as they were not considered impact protectors and would provide limited, if any, energy absorption. Replacing the knee armour with higher performing impact protectors and adding hip impact protectors would improve the protection levels of this garment. There are no vents to allow airflow movement through the garment. Breathability was measured without the removable thermal liner installed.

**Jacket and Pants - Crash Impact Risk Zones**

This diagram is a pictorial representation of the crash impact risk Zones.


**Zone 1**

High risk of abrasion  
High risk of impact

**Zone 2**

High risk of abrasion

**Zone 3**

Medium risk of abrasion

**Zone 4**

Low risk of abrasion

**Removable liners**

Thermal liner	<input checked="" type="checkbox"/>
Water-resistant liner	<input type="checkbox"/>

**Removable impact protection**

	Pockets	Armour
Knee	<input checked="" type="checkbox"/>	<input checked="" type="checkbox"/>
Hip	<input checked="" type="checkbox"/>	<input type="checkbox"/>

## Abrasion Resistance

These pants were tested for abrasion resistance in accordance with MotoCAP test protocols. The diagram below is a visual indication of the likely abrasion performance of the materials in each zone calculated from the data in the table below. The colour coding is based on the worst performing material in each zone.



### Abrasion Resistance Performance

Abrasion rating	1/10
Abrasion score	0.35

Determining Criteria	Area	Good	Acceptable	Marginal	Poor
High abrasion risk	Zones 1 & 2	> 5.6	3.0 - 5.6	1.3 - 2.9	< 1.3
Medium abrasion risk	Zone 3	> 2.5	1.8 - 2.5	0.8 - 1.7	< 0.8
Low abrasion risk	Zone 4	> 1.5	1.0 - 1.5	0.4 - 0.9	< 0.4

**Individual Abrasion Resistance Results:** - The table below shows the test results for time to abrade through all layers of the materials. Calculated for each sample by Zone, type and area coverage of each material as a proportion of that Zone. Abrasion times are capped at a maximum of 10.00s.

### Abrasion time for each test (seconds)

Zones 1 & 2	Coverage (%)	Sample 1	Sample 2	Sample 3	Sample 4	Sample 5	Sample 6	Average	
Material A	60%	3.69	5.72	3.64	1.88	2.19	2.01	3.19	A
Material B	40%	0.57	0.35	0.57	0.53	0.39	0.58	0.50	P
Zone 3	Coverage (%)	Sample 1	Sample 2	Sample 3	Sample 4	Sample 5	Sample 6	Average	
Material B	90%	0.57	0.35	0.57	0.53	0.39	0.58	0.50	P
Material C	10%	0.59	1.11	1.15	0.90			0.94	M
Zone 4	Coverage (%)	Sample 1	Sample 2	Sample 3	Sample 4	Sample 5	Sample 6	Average	
Material B	95%	0.57	0.35	0.57	0.53	0.39	0.58	0.50	M
Material C	5%	0.59	1.11	1.15	0.90			0.94	M

### Details of materials used in pant

Material A	Heavy woven fabric shell and water-resistant layer
Material B	Woven fabric shell and water-resistant layer
Material C	Stretch woven fabric and water-resistant layer

## Burst Strength

These pants were tested for burst strength in accordance with MotoCAP test protocols. The diagram below illustrates the burst strength results in terms of the likely performance of the garment in an impact and is a pictorial representation of the data from the table below.



### Burst Strength Performance

Burst rating	10/10
Burst score	1183

Determining Criteria	Unit	Good	Acceptable	Marginal	Poor
Burst strength	(kPa)	> 1000	800 - 1000	500 - 799	< 500

**Individual Burst Strength Results:** - The table below shows the burst pressure in kilopascals (kPa) for each sample tested by Zone and the average result for each zone.

### Burst pressure for each seam (kPa)

Area	Sample 1	Sample 2	Sample 3	Sample 4	Sample 5	Sample 6	Average	
Zones 1 & 2	1528	1582	1516	1460	809	769	1277	G
Zones 3 & 4	990	596	1242	639	775	603	808	A

## Impact Protection

These pants were tested for impact protection and coverage in accordance with MotoCAP test protocols. The diagram below is a visual indication of the likely performance of each impact protector calculated from the data in the table below. The colour coding is based on the worst performing score for average or maximum force for each impact zone. Areas shaded black are not considered for impact protection ratings.



### Impact Protection Performance

Impact rating	1/10
Impact score	0.0

Determining Criteria	Unit	Good	Acceptable	Marginal	Poor*
Impact force	(kN)	< 15	15 - 24	25 - 30	> 30

\* Poor may also indicate that no impact protector, or impact protector pocket is present in the garment

**Impact Protector Results:** - The table below shows the average and maximum force transmitted through each impact protector type in kilonewtons (kN) and their area of coverage as a proportion (%) of the Zone.

Impact protector type	Knee	Hip
Average force (kN)	28.3	
Maximum force (kN)	40.9	
Coverage of Zone 1 area	100%	0%
Coverage of Zone after displacement	50%	0%

**Individual Impact Protector Results:** - The table below shows the test results for each strike on individual impact protectors in kilonewtons (kN) and the position of the strike. Individual strike results are capped at a maximum of 50kN.

### Force transfer for each impact strike (kN)

Impact protector type	Knee			Hip		
Strike location	Centre	Mid	Edge	Centre	Mid	Edge
Impact Protector 1	20.8	22.1	34.5			
Impact Protector 2	27.3	23.8	40.9			
Impact Protector 3	24.5	28.1	33.0			

### Breathability

These pants were tested for breathability following the MotoCAP test protocols. The table below shows the moisture vapour resistance and the thermal resistance values obtained.

Without removable liners		With water-resistant liner	
Breathability rating	↘	Breathability rating	N/A
Breathability score	0.066	Breathability score	N/A

Moisture Vapour Resistance - $R_{et}$ (kPa.m <sup>2</sup> /W)	1	2	Average
Without removable liners	196.8	192.2	194.5
With water-resistant liner	N/A	N/A	N/A

Thermal Resistance - $R_{ct}$ (K.m <sup>2</sup> /W)	1	2	Average
Without removable liners	0.218	0.211	0.214
With water-resistant liner	N/A	N/A	N/A

### Water spray and rain resistance

This pants are advertised as water-resistant, and so has been tested for water spray and rain resistance according to the MotoCAP test protocols. The table below shows the water absorbed (ml) and the wetting proportion (%) of the garment and undergarments due to water absorption.

	Water absorbed by garment		Water absorbed by underwear	
	Volume (ml)	Percentage (%)	Volume (ml)	Percentage (%)
Pants 1	140	13%	0	0%
Pants 2	97	9%	12	4%
<b>Average</b>	119	11%	6	4%

### Location of wetting

Minor visible wetting to the cotton underwear was present at the waistband of both pants tested. Minor visible wetting to the cotton underwear was also present at the upper legs of one of the pants tested.

### Assessment Details.

Brand	MotoDry
Model	Thermo
Type	Pants - Textile
Date purchased	20 January 2024
Tested by	AMCAF, Deakin University
Report approved by	MotoCAP Chief Scientist
Garment test reference	P24T15
Rating first published	June 2024
Rating updated	4 November 2024