


This MotoCAP safety rating applies to:

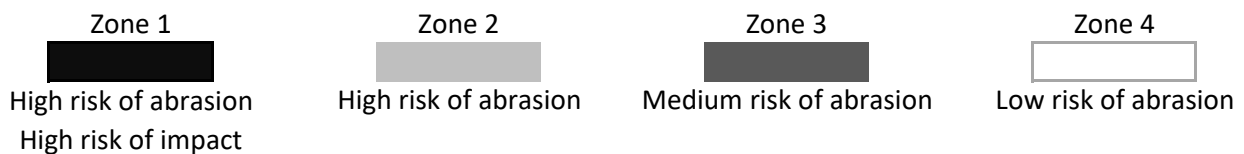
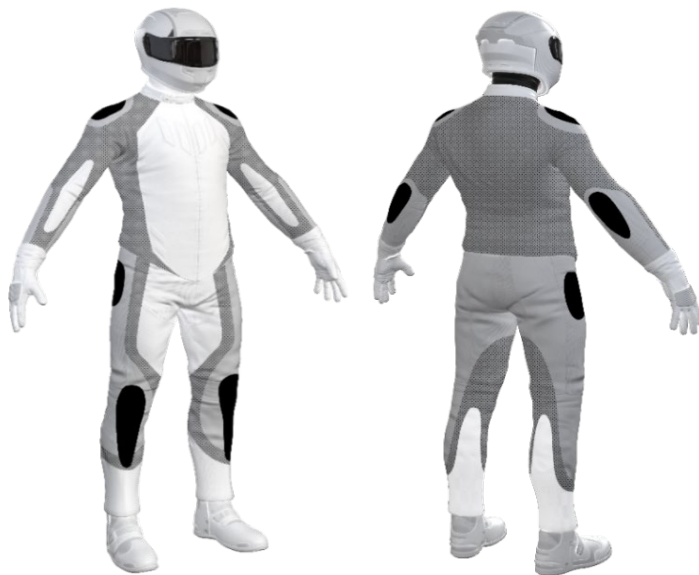
Brand	MotoDry
Model	Revolt
Type	Jacket - Textile
Date purchased	12 September 2022
Sizes tested	L and XL
Test garment gender	Male
Style	All Purpose
RRP	\$299.95

Test Results Summary	Rating	Score
MotoCAP Protection Rating	★★	32.8
Abrasion	4/10	2.90
Burst	10/10	1305
Impact	3/10	17.7
MotoCAP Breathability Rating	★★	0.363
Moisture Vapour Resistance	-	36.6
Thermal Resistance	-	0.221
Water resistance	1/10	69.0

This garment is fitted with impact protectors for the elbows and shoulders. Replacing the elbow and shoulder armour with higher performing impact protectors would improve the protection levels of this garment. Mesh panels are located in the arms, chest and back to allow airflow movement through the garment. This garment has a removable water-resistant liner. The breathability rating above was achieved with the water-resistant liner removed. When tested with the water resistant-liner installed, the breathability rating reduced to half a star.

Jacket and Pants - Crash Impact Risk Zones

This diagram is a pictorial representation of the crash impact risk Zones.


Removable liners

Thermal liner	<input type="checkbox"/>
Water resistant liner	<input checked="" type="checkbox"/>

Removable impact protection

	Pockets	Armour
Elbow	<input checked="" type="checkbox"/>	<input checked="" type="checkbox"/>
Shoulder	<input checked="" type="checkbox"/>	<input checked="" type="checkbox"/>
Back	<input checked="" type="checkbox"/>	<input type="checkbox"/>

Abrasion Resistance

The jacket was tested for abrasion resistance in accordance with MotoCAP test protocols. The diagram below is a visual indication of the likely abrasion performance of the materials in each zone calculated from the data in the table below. The colour coding is based on the worst performing material in each zone.



Abrasion Resistance Performance

Abrasion rating	4/10
Abrasion score	2.90

Determining Criteria	Area	Good	Acceptable	Marginal	Poor
High abrasion risk	Zone 1 & 2	> 5.6	3.0 - 5.6	1.3 - 2.9	< 1.3
Medium abrasion risk	Zone 3	> 2.5	1.8 - 2.5	0.8 - 1.7	< 0.8
Low abrasion risk	Zone 4	>1.5	1.0 - 1.5	0.4 - 0.9	< 0.4

Individual Abrasion Resistance Results: - The table below shows the test results for time to abrade through all layers of the materials. Calculated for each sample by Zone, type and area coverage of each material as a proportion of that Zone. Abrasion times are capped at a maximum of 10.00s.

Abrasion time for each test (seconds)

Zone	Coverage (%)	Sample 1	Sample 2	Sample 3	Sample 4	Sample 5	Sample 6	Average	Grade
Zone 1 & 2									
Material A	100%	4.58	4.78	5.04	4.23	4.22	3.07	4.32	A
Zone 3									
Material A	15%	4.58	4.78	5.04	4.23	4.22	3.07	4.32	G
Material B	85%	0.46	0.33	0.36	0.38	0.40	0.39	0.39	P
Zone 4									
Material B	100%	0.46	0.33	0.36	0.38	0.40	0.39	0.39	P

Details of materials used in jacket

Material A	Leather patch over woven fabric shell with mesh inner liner
Material B	Mesh fabric shell with mesh inner liner

Burst Strength

The jacket was tested for burst strength in accordance with MotoCAP test protocols. The diagram below illustrates the burst strength results in terms of the likely performance of the garment in an impact and is a pictorial representation of the data from the table below.



Burst Strength Performance

Burst rating	10/10
Burst score	1305

Determining Criteria	Unit	Good	Acceptable	Marginal	Poor
Burst strength	(kPa)	> 1000	800 - 1000	500 - 799	< 500

Individual Burst Strength Results: - The table below shows the burst pressure in kilopascals (kPA) for each sample tested by Zone and the average result for each zone.

Burst pressure for each seam (kPA)

Area	Sample 1	Sample 2	Sample 3	Sample 4	Sample 5	Sample 6	Average	
Zones 1 & 2	1718	951	1453	1608	1191	1032	1325	G
Zones 3 & 4	685	1259	1223	1495	1310	1367	1223	G

Impact Protection

The jacket was tested for impact protection and coverage in accordance with MotoCAP test protocols. The diagram below is a visual indication of the likely performance of each impact protector calculated from the data in the table below. The colour coding is based on the worst performing score for average or maximum force for each impact zone. Areas shaded black are not considered for impact protection ratings.



Impact Protection Performance

Impact rating	3/10
Impact score	17.7

Determining Criteria	Unit	Good	Acceptable	Marginal	Poor*
Impact force	(kN)	< 15	15 - 24	25 - 30	> 30

* Poor may also indicate that no impact protector, or impact protector pocket is present in the garment

Individual Impact Protector Results: - The table below shows the test results for each strike on each impact protector in kilonewtons (kN) and their area of coverage as a proportion (%) of the Zone. Individual strike results are capped at a maximum of 50kN.

Impact protector type	Elbow		Shoulder	
Average force (kN)	22.6	A	30.3	P
Maximum force (kN)	28.1	M	35.4	P
Coverage of Zone 1 area	95%		80%	
Coverage of Zone after displacement	70%		80%	

Individual Impact Protector Results: - The table below shows the test results for each strike on individual impact protectors in kilonewtons (kN) and the position of the strike. Individual strike results are capped at a maximum of 50kN.

Force transfer for each impact strike (kN)

Impact protector type	Elbow			Shoulder		
	Centre	Mid	Edge	Centre	Mid	Edge
Impact Protector 1	20.3	25.4	23.0	26.9	28.1	34.8
Impact Protector 2	18.2	27.9	21.1	28.5	25.6	29.6
Impact Protector 3	22.0	17.5	28.1	30.5	33.2	35.4

Breathability

The jacket was tested for breathability following the MotoCAP test protocols. The table below shows the moisture vapour resistance and the thermal resistance values obtained.

Without removable liners		With water-resistant liner	
Breathability rating	★★	Breathability rating	★
Breathability score	0.363	Breathability score	0.022

Moisture Vapour Resistance - R_{et} (kPa.m ² /W)	1	2	Average
Without removable liners	34.9	38.3	36.6
With water-resistant liner	774.6	814.0	794.3
Thermal Resistance - R_{ct} (K.m ² /W)	1	2	Average
Without removable liners	0.212	0.231	0.221
With water-resistant liner	0.296	0.294	0.295

Water spray and rain resistance

This jacket is advertised as water-resistant, and so has been tested for water spray and rain resistance according to the MotoCAP test protocols. The table below shows the water absorbed (ml) and the wetting proportion (%) of the garment and undergarments due to water absorption.

	Water absorbed by garment		Water absorbed by underwear	
	Volume (ml)	Percentage (%)	Volume (ml)	Percentage (%)
Jacket 1	1053	57%	196	68%
Jacket 2	1268	68%	203	70%
Average	1161	63%	199	69%

Location of wetting

There was major wetting to the cotton underwear present at the cuffs of the sleeves and chest for both jackets tested.

Assessment Details.

Brand	MotoDry
Model	Revolt
Type	Jacket - Textile
Date purchased	12 September 2022
Tested by	AMCAF, Deakin University
Report approved by	MotoCAP Chief Scientist
Garment test reference	J21T10
Rating first published	October 2022
Rating updated	31 October 2022