


This MotoCAP safety rating applies to:

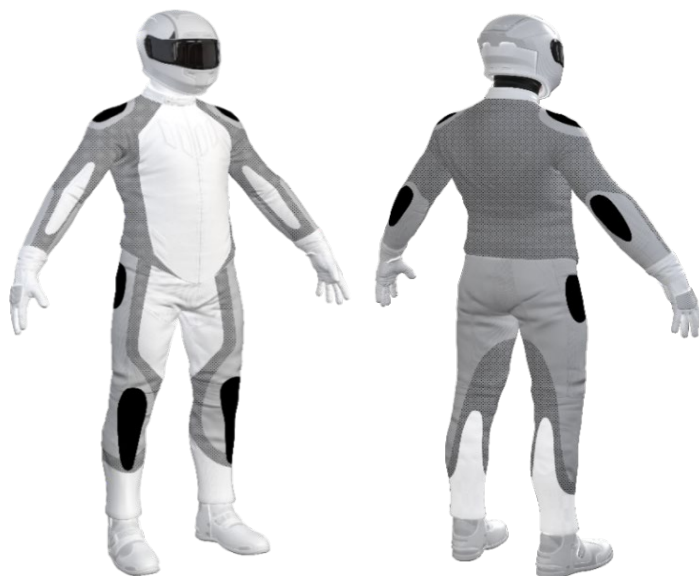
Brand	Triumph
Model	Terra GTX
Type	Pants - Textile
Date purchased	15 June 2022
Sizes tested	36 and 38
Test garment gender	Male
Style	All Purpose
RRP	\$349.95





Test Results Summary	Rating	Score
MotoCAP Protection Rating	★★	34.7
Abrasion	1/10	0.42
Burst	10/10	1428
Impact	8/10	61.1
MotoCAP Breathability Rating	★★★	0.456
Moisture Vapour Resistance	-	35.6
Thermal Resistance	-	0.271
Water resistance	9/10	1.3

This garment is fitted with impact protectors for the knees and hips. There are no vents to allow airflow movement through the garment. This garment has a removable water-resistant liner. The breathability rating above was achieved with the thermal and water-resistant liners removed. When tested with the water-resistant liner installed, the breathability rating reduced but remained within the 3 star range.

Jacket and Pants - Crash Impact Risk Zones

This diagram is a pictorial representation of the crash impact risk Zones.



Zone 1	Zone 2	Zone 3	Zone 4
			
High risk of abrasion High risk of impact	High risk of abrasion	Medium risk of abrasion	Low risk of abrasion

Removable liners

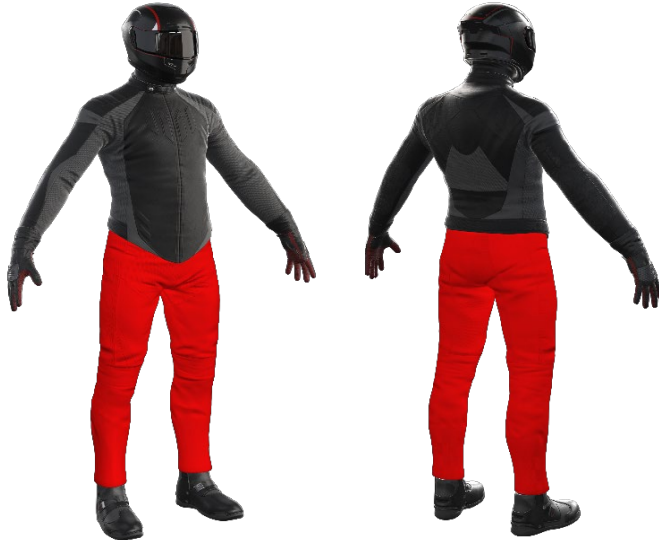
Thermal liner	<input type="checkbox"/>
Water-resistant liner	<input checked="" type="checkbox"/>

Removable impact protection

	Pockets	Armour
Knee	<input checked="" type="checkbox"/>	<input checked="" type="checkbox"/>
Hip	<input checked="" type="checkbox"/>	<input checked="" type="checkbox"/>

Abrasion Resistance

These pants were tested for abrasion resistance in accordance with MotoCAP test protocols. The diagram below is a visual indication of the likely abrasion performance of the materials in each zone calculated from the data in the table below. The colour coding is based on the worst performing material in each zone.



Abrasion Resistance Performance

Abrasion rating	1/10
Abrasion score	0.42

Determining Criteria	Area	Good	Acceptable	Marginal	Poor
High abrasion risk	Zones 1 & 2	> 5.6	3.0 - 5.6	1.3 - 2.9	< 1.3
Medium abrasion risk	Zone 3	> 2.5	1.8 - 2.5	0.8 - 1.7	< 0.8
Low abrasion risk	Zone 4	> 1.5	1.0 - 1.5	0.4 - 0.9	< 0.4

Individual Abrasion Resistance Results: - The table below shows the test results for time to abrade through all layers of the materials. Calculated for each sample by Zone, type and area coverage of each material as a proportion of that Zone. Abrasion times are capped at a maximum of 10.00s.

Abrasion time for each test (seconds)

Zones 1 & 2	Coverage (%)	Sample 1	Sample 2	Sample 3	Sample 4	Sample 5	Sample 6	Average	
Material A	80%	0.92	0.62	0.74	1.11	0.71	0.97	0.84	P
Material B	20%	0.33	0.23	0.19	0.26	0.36	0.26	0.27	P
Zone 3	Coverage (%)	Sample 1	Sample 2	Sample 3	Sample 4	Sample 5	Sample 6	Average	
Material B	100%	0.33	0.23	0.19	0.26	0.36	0.26	0.27	P
Zone 4	Coverage (%)	Sample 1	Sample 2	Sample 3	Sample 4	Sample 5	Sample 6	Average	
Material B	100%	0.33	0.23	0.19	0.26	0.36	0.26	0.27	P

Details of materials used in jacket

Material A	Woven fabric shell with fabric inner layer
Material B	Woven fabric shell

Burst Strength

These pants were tested for burst strength in accordance with MotoCAP test protocols. The diagram below illustrates the burst strength results in terms of the likely performance of the garment in an impact and is a pictorial representation of the data from the table below.



Burst Strength Performance

Burst rating	10/10
Burst score	1428

Determining Criteria	Unit	Good	Acceptable	Marginal	Poor
Burst strength	(kPa)	> 1000	800 - 1000	500 - 799	< 500

Individual Burst Strength Results: - The table below shows the burst pressure in kilopascals (kPa) for each sample tested by Zone and the average result for each zone.

Burst pressure for each seam (kPa)

Area	Sample 1	Sample 2	Sample 3	Sample 4	Sample 5	Sample 6	Average	
Zones 1 & 2	852	1363	2007	2022	1098	972	1385	G
Zones 3 & 4	1042	2003	1674	1441	1439	2005	1601	G

Impact Protection

These pants were tested for impact protection and coverage in accordance with MotoCAP test protocols. The diagram below is a visual indication of the likely performance of each impact protector calculated from the data in the table below. The colour coding is based on the worst performing score for average or maximum force for each impact zone. Areas shaded black are not considered for impact protection ratings.



Impact Protection Performance

Impact rating	8/10
Impact score	61.1

Determining Criteria	Unit	Good	Acceptable	Marginal	Poor*
Impact force	(kN)	< 15	15 - 24	25 - 30	> 30

* Poor may also indicate that no impact protector, or impact protector pocket is present in the garment

Impact Protector Results: - The table below shows the average and maximum force transmitted through each impact protector type in kilonewtons (kN) and their area of coverage as a proportion (%) of the Zone.

Impact protector type	Knee		Hip	
Average force (kN)	16.7	A	15.4	A
Maximum force (kN)	18.0	A	16.2	A
Coverage of Zone 1 area	110%		130%	
Coverage of Zone after displacement	100%		100%	

Individual Impact Protector Results: - The table below shows the test results for each strike on individual impact protectors in kilonewtons (kN) and the position of the strike. Individual strike results are capped at a maximum of 50kN.

Force transfer for each impact strike (kN)

Impact protector type	Knee			Hip		
	Centre	Mid	Edge	Centre	Mid	Edge
Impact Protector 1	16.0	16.6	15.6	15.2	14.8	15.2
Impact Protector 2	17.0	17.2	17.6	16.2	15.9	15.8
Impact Protector 3	17.2	15.6	18.0	15.0	15.2	15.7

Breathability

These pants were tested for breathability following the MotoCAP test protocols. The table below shows the moisture vapour resistance and the thermal resistance values obtained.

Without removable liners

Breathability rating	★★★
Breathability score	0.456

With water-resistant liner

Breathability rating	★★★
Breathability score	0.439

Moisture Vapour Resistance - R_{et} (kPa.m ² /W)	1	2	Average
Without removable liners	37.2	34.0	35.6
With water-resistant liner	43.2	45.5	44.4
Thermal Resistance - R_{ct} (K.m ² /W)	1	2	Average
Without removable liners	0.270	0.272	0.271
With water-resistant liner	0.311	0.338	0.325

Water spray and rain resistance

This pants are advertised as water-resistant, and so has been tested for water spray and rain resistance according to the MotoCAP test protocols. The table below shows the water absorbed (ml) and the wetting proportion (%) of the garment and undergarments due to water absorption.

	Water absorbed by garment		Water absorbed by underwear	
	Volume (ml)	Percentage (%)	Volume (ml)	Percentage (%)
Pants 1	239	19%	5	1.9%
Pants 2	144	12%	2	0.8%
Average	192	16%	4	1.3%

Location of wetting

There was no visible wetting to the cotton underwear for either pants tested.

Assessment Details.

Brand	Triumph
Model	Terra GTX
Type	Pants - Textile
Date purchased	15 June 2022
Tested by	AMCAF, Deakin University
Report approved by	MotoCAP Chief Scientist
Garment test reference	P21T04
Rating first published	July 2022
Rating updated	25 July 2022