


This MotoCAP safety rating applies to:

Brand: RST
Model: Isle of Man TT Hillberry
Type: Jacket - Leather
Date purchased: 28 August 2019
Sizes tested: 48 and 56
Gender: M
Style: Cruiser
Test code: J19L23

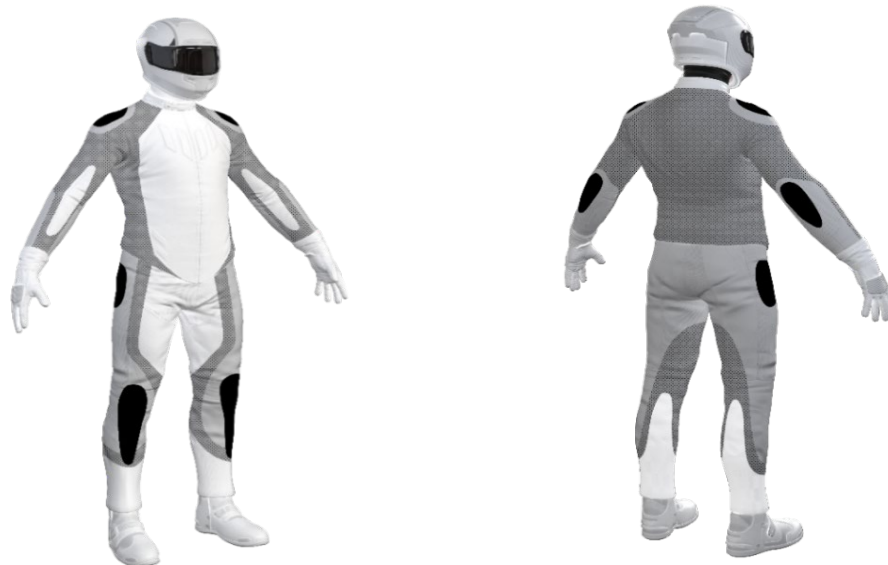
Test Results Summary:




	Rating	Score
MotoCAP Protection Rating	★★★★	54.4
Abrasion	8/10	5.85
Burst	10/10	1695
Impact	4/10	27.5
MotoCAP Comfort Rating	★	0.199
Moisture Vapour Resistance		85.0
Thermal Resistance		0.281
Water resistance	N/A	N/A

This garment is fitted with impact protectors for the elbows and shoulders. A pocket is provided at the back for an aftermarket impact protector. There are no vents to allow airflow movement through the garment.

Jacket and Pants - Crash Impact Risk Zones

This diagram is a pictorial representation of the crash impact risk Zones.



Zone 1  High risk of abrasion High risk of impact	Zone 2  High risk of abrasion	Zone 3  Medium risk of abrasion	Zone 4  Low risk of abrasion
--	---	--	--

Abrasion Resistance

The garment was tested for abrasion resistance in accordance with MotoCAP test protocols. The table below shows the test results for time to abrade through all layers of the materials. Calculated for each sample by Zone, type and area coverage of each material as a proportion of that Zone.

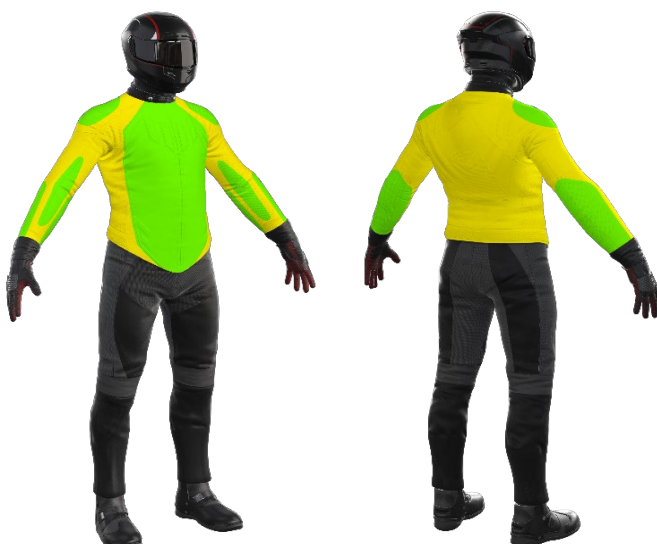
Details of materials used in garment:

Material A:	Quilted leather shell, quilted fabric layer and mesh inner liner
Material B:	Leather shell with mesh inner liner

Zone	Coverage (%)	Abrasion time for each test (seconds)						Average (seconds)	
		1	2	3	4	5	6		
Zone 1 and 2 areas (High abrasion risk)									
Material A	100%	5.98	11.49	7.73	7.30	8.76	7.60	8.14	G
Zone 3 area (Medium abrasion risk)									
Material B	100%	2.32	1.86	2.37	2.15	2.67	3.05	2.40	A
Zone 4 area (Low abrasion risk)									
Material B	100%	2.32	1.86	2.37	2.15	2.67	3.05	2.40	G

Abrasion times are capped at a maximum of 10.00s.

The diagram below is a visual indication of the likely abrasion performance of the materials in each zone calculated from the data in the table above. The colour coding is based on the worst performing material in each zone.



Determining Criteria		Good	Acceptable	Marginal	Poor
High abrasion risk	Zone 1/2:	> 5.6	3.0 - 5.6	1.3 - 2.9	< 1.3
Medium abrasion risk	Zone 3:	> 2.5	1.8 - 2.5	0.8 - 1.7	< 0.8
Low abrasion risk	Zone 4:	> 1.5	1.0 - 1.5	0.4 - 0.9	< 0.4

Burst Strength

The garment's burst strength was tested in accordance with MotoCAP test protocols. The table below shows the burst pressure in kilopascals (kPa) for each sample tested by Zone and the average result for each zone.

Burst pressure (kPa)

Area	1	2	3	4	5	Average	
Zones 1 & 2	1500	1785	1765	1936	1304	1658	G
Zone EZ	1942	1946	1946	1946	1665	1889	G
Zones 3 & 4	1312	1347	962	1587	1691	1380	G

The diagram below illustrates the burst strength results in terms of the likely performance of the garment in an impact and is a pictorial representation of the data from the table above.



Determining Criteria

Burst strength

	Good	Acceptable	Marginal	Poor
(kPa)	> 1000	800 - 1000	500 - 799	< 500

Impact Protection

The garment was tested for impact protection and coverage in accordance with MotoCAP test protocols. The table below shows the test results for each strike on each impact protector in kilonewtons (kN) and their area of coverage as a proportion (%) of the Zone.

Impact protector type	Elbow		Shoulder	
Average force (kN)	22.4	A	23.1	A
Maximum force (kN)	25.4	M	31.4	P
Coverage of zone 1 area	95%		95%	
Coverage of zone after displacement	80%		95%	

Individual test results

Impact force (kN)	Elbow			Shoulder		
Strike location	A	B	C	A	B	C
Impact Protector 1	18.3	21.6	24.8	21.7	19.6	22.2
Impact Protector 2	22.0	21.7	25.4	31.4	22.8	23.8
Impact Protector 3	21.1	21.7	25.3	21.4	22.4	22.5

The diagram below is a visual indication of the likely performance of each impact protector calculated from the data in the table above. The colour coding is based on the worst performing score for average or maximum force for each impact zone.



Determining Criteria		Good	Acceptable	Marginal	Poor*
Impact force	(kN)	< 15	15 - 24	25 - 30	> 30

* Poor may also indicate that no impact protector, or impact protector pocket is present in the garment

Areas shaded black are not considered in the impact protection ratings.

Thermal comfort

The garment was tested for thermal comfort following the MotoCAP test protocols. The table below shows the moisture vapour resistance and the thermal resistance values obtained.

	1	2	Average
Moisture Vapour Resistance - R_{et} (kPam ² /W)	88.5	81.6	85.0

	1	2	Average
Thermal Resistance - R_{ct} (Km ² /W)	0.290	0.273	0.281

Water spray and rain resistance

This garment has not been advertised as water resistant so has not been tested for water spray and rain resistance.

Assessment Details.

Brand	RST
Model	Isle of Man TT Hillberry
Type	Jacket - Leather
Date purchased	28 August 2019
Tested by	AMCAF, Deakin University
Garment test reference	J19L23
Rating first published	November 2019
Rating updated	1 October 2021