


This MotoCAP safety rating applies to:

Brand: Ducati
Model: G. Pelle Corse C3
Type: Jacket - Leather
Date purchased: 23 July 2018
Sizes tested: 52
Gender: M
Style: Sports
Test code: J18L07

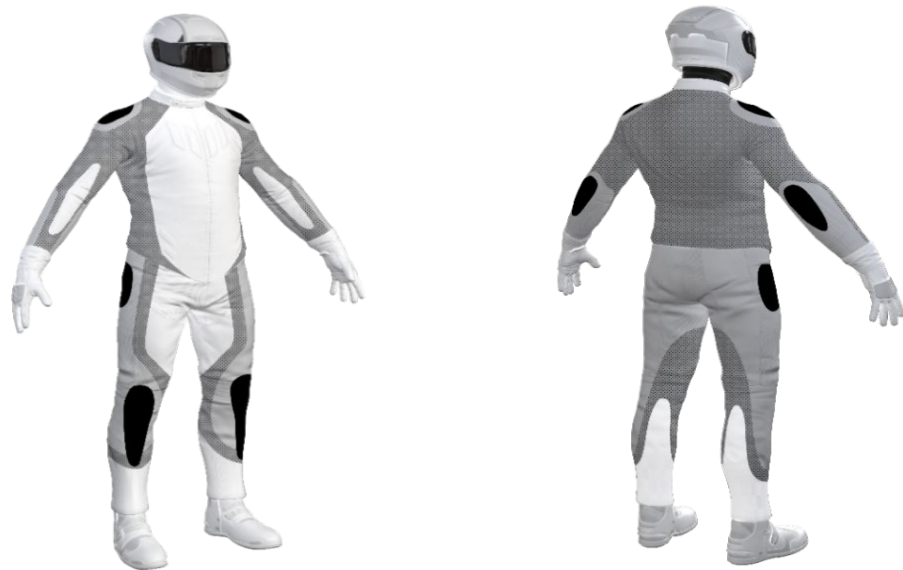
Test Results Summary:

	Rating	Result
MotoCAP Protection Rating	★★★★	60.2
Abrasion	8/10	5.91
Burst	10/10	1472
Impact	7/10	53.2
MotoCAP Comfort Rating	↓	0.114
Moisture Vapour Resistance		122.2
Thermal Resistance		0.232
Water Resistance	N/A	

This garment is fitted with impact protectors for the elbows and shoulders, with a pocket provided for the addition of an aftermarket back protector. There are no ventilation ports for air flow control within the jacket to aid cooling in hot weather.

Jacket and Pants - Crash Impact Risk Zones

This diagram is a pictorial representation of the crash impact risk Zones.


Zone 1


High risk of abrasion
High risk of impact

Zone 2


High risk of abrasion

Zone 3


Medium risk of abrasion

Zone 4


Low risk of abrasion

**Ducati G. Pelle Corse C3
Leather Jacket**

Abrasion Resistance

The garment was tested for abrasion resistance following the MotoCAP test protocols. The table below shows the test results for time to abrade through all layers of the materials. Calculated for each sample by Zone, type and area coverage of each material as a proportion of that Zone.

Details of materials used in garment:

Material A:	Single layer of stretch leather outer, fabric layer and mesh inner liner
Material B:	Single layer of leather outer and thick 3D mesh inner liner
Material C:	Single layer of leather outer and mesh inner liner
Material D:	Stretch fabric outer and mesh inner liner

Zone	Coverage (%)	Abrasion time for each test (s)						Average (s)	
		1	2	3	4	5	6		
Zone 1 and 2 areas (High abrasion risk)									
Material A	100%	8.10	4.75	5.25	6.29	6.96	4.59	5.99	G
Zone 3 area (Medium abrasion risk)									
Material B	80%	7.49	8.44	7.56	7.68	8.79	8.09	8.01	G
Material C	20%	3.45	3.01	3.86	4.03	4.55	3.88	3.79	G
Zone 4 area (Low abrasion risk)									
Material C	80%	3.45	3.01	3.86	4.03	4.55	3.88	3.79	G
Material D	20%	2.13	1.50	3.48	2.67			2.44	G

The diagram below is a visual indication of the likely abrasion performance of the materials in each Zone calculated from the data in the table above.



Determining Criteria		Good	Acceptable	Marginal	Poor
High abrasion risk	Zone 1/2:	> 5.6	3.0 - 5.6	1.3 - 2.9	< 1.3
Medium abrasion risk	Zone 3:	> 2.5	1.8 - 2.5	0.8 - 1.7	< 0.8
Low abrasion risk	Zone 4:	>1.5	1.0 - 1.5	0.4 - 0.9	< 0.4

Burst Strength

The garment's burst strength was tested following the MotoCAP test protocols. The table below shows the burst pressure in kilopascals (kPA) for each sample tested by Zone and the average result for each Zone.

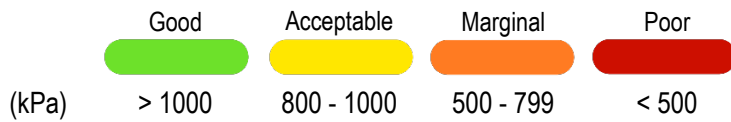
Burst pressure (kPA)

Area	1	2	3	4	5	Average	
Zones 1 & 2	1719	1279	1232	1858	1787	1575	G
Zone EZ	1274	1194	860	1573	1221	1224	G
Zones 3 & 4	1900	1947	1416	1597	1939	1760	G

The diagram below illustrates the burst strength results in terms of the likely performance of the garment in an impact and is a pictorial representation of the data from the table above.



Determining Criteria
Burst strength



Impact Protection

The garment was tested for impact protection and coverage following the MotoCAP test protocols. The table below shows the test results for each strike on each impact protector in kilonewton (kN) and their area of coverage as a proportion (%) of the Zone.

Impact protector type	Elbow		Shoulder	
Average force	22.0	A	22.9	A
Maximum force	25.3	M	28.0	M
Coverage of zone 1 area	160%		105%	
Coverage of zone after displacement	160%		105%	

Individual test results

Impact force (kN)	Elbow			Shoulder		
	A	B	C	A	B	C
Impact Protector 1	19.7	24.5	25.3	19.6	21.0	25.9
Impact Protector 2	17.3	22.9	22.0	13.8	24.1	28.0
Impact Protector 3	24.7	20.3	21.1	24.9	22.3	26.8

The diagram below is a visual indication of the likely impact performance of each impact protector calculated from the data in the table above.



Determining Criteria	Burst strength (kN)			
	Good	Acceptable	Marginal	Poor*
Burst strength (kN)	< 15	15 - 24	25 - 30	> 30

* Poor may also indicate that no impact protector, or impact protector pocket is present in the garment

Thermal comfort

The garment was tested for thermal comfort following the MotoCAP test protocols. The table below shows the moisture vapour resistance and the thermal resistance values obtained.

	1	2	Average
Moisture Vapour Resistance - R_{et} (kPam ² /W)	122.5	121.8	122.2
	1	2	Average
Thermal Resistance - R_{ct} (Km ² /W)	0.228	0.236	0.232

Water spray and rain resistance

This garment has not been advertised as water resistant so has not been tested for water spray and rain resistance.

Assessment Details.

Brand	Ducati
Model	G. Pelle Corse C3
Type	Jacket - Leather
Date purchased	23 July 2018
Tested by	AMCAF, Deakin University
Garment test reference	J18L07
Rating first published	October 2018
Rating updated	1 October 2021