


This MotoCAP safety rating applies to:

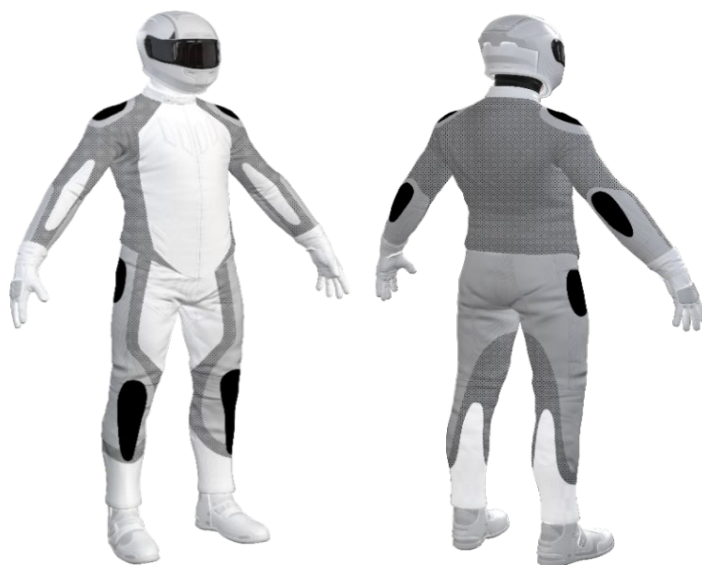
| | |
|---------------------|------------------|
| Brand | BMW |
| Model | Rider Ladies |
| Type | Pants - Textile |
| Date purchased | 29 November 2019 |
| Sizes tested | 38 and 42 |
| Test garment gender | Female |
| Style | All Purpose |
| RRP | \$440.00 |


| Test Results Summary | Rating | Score |
|------------------------------|--------|-------|
| MotoCAP Protection Rating | ★ | 22.0 |
| Abrasion | 1/10 | 0.20 |
| Burst | 8/10 | 837 |
| Impact | 6/10 | 41.9 |
| MotoCAP Breathability Rating | ★★★ | 0.477 |
| Moisture Vapour Resistance | - | 32.3 |
| Thermal Resistance | - | 0.257 |
| Water resistance | 8/10 | 3.1 |


This garment is fitted with impact protectors for the knees and hips. There are vents in the upper legs to allow airflow movement through the garment. The breathability rating is based on tests of the breathability of the garment when all vents are closed. The breathability of this product may be better when the vents can be opened. This garment has a removable water-resistant liner. The breathability rating above was achieved with the water-resistant liner removed. When tested with the water-resistant liner installed, the breathability rating reduced but remained within the 3 star range.


Jacket and Pants - Crash Impact Risk Zones


This diagram is a pictorial representation of the crash impact risk Zones.



Zone 1

 High risk of abrasion
 High risk of impact

Zone 2

 High risk of abrasion

Zone 3

 Medium risk of abrasion

Zone 4

 Low risk of abrasion

Removable liners

| | |
|-----------------------|-------------------------------------|
| Thermal liner | <input type="checkbox"/> |
| Water-resistant liner | <input checked="" type="checkbox"/> |

Removable impact protection

| | | |
|------|-------------------------------------|-------------------------------------|
| | Pockets | Armour |
| Knee | <input checked="" type="checkbox"/> | <input checked="" type="checkbox"/> |
| Hip | <input checked="" type="checkbox"/> | <input checked="" type="checkbox"/> |

Abrasion Resistance

These pants were tested for abrasion resistance in accordance with MotoCAP test protocols. The diagram below is a visual indication of the likely abrasion performance of the materials in each zone calculated from the data in the table below. The colour coding is based on the worst performing material in each zone.



Abrasion Resistance Performance

| | |
|-----------------|------|
| Abrasion rating | 1/10 |
| Abrasion score | 0.20 |

| Determining Criteria | Area | Good | Acceptable | Marginal | Poor |
|----------------------|-------------|-------|------------|-----------|-------|
| High abrasion risk | Zones 1 & 2 | > 5.6 | 3.0 - 5.6 | 1.3 - 2.9 | < 1.3 |
| Medium abrasion risk | Zone 3 | > 2.5 | 1.8 - 2.5 | 0.8 - 1.7 | < 0.8 |
| Low abrasion risk | Zone 4 | >1.5 | 1.0 - 1.5 | 0.4 - 0.9 | < 0.4 |

Individual Abrasion Resistance Results: - The table below shows the test results for time to abrade through all layers of the materials. Calculated for each sample by Zone, type and area coverage of each material as a proportion of that Zone. Abrasion times are capped at a maximum of 10.00s.

Abrasion time for each test (seconds)

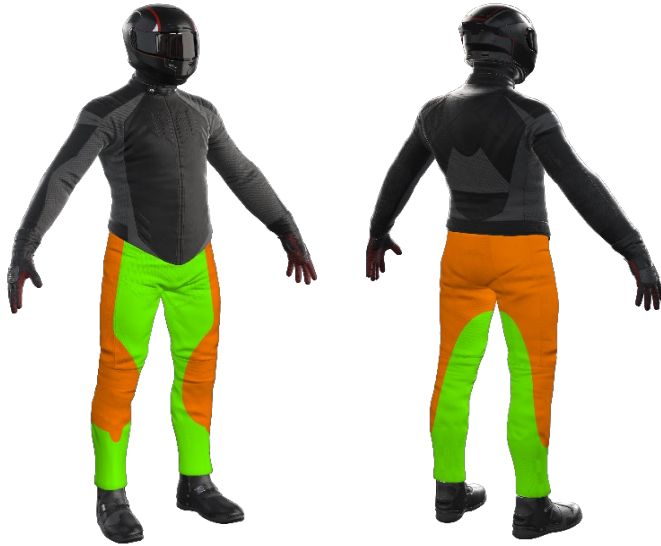
| Zones 1 & 2 | Coverage (%) | Sample 1 | Sample 2 | Sample 3 | Sample 4 | Sample 5 | Sample 6 | Average | |
|-------------|--------------|----------|----------|----------|----------|----------|----------|---------|---|
| Material A | 55% | 0.87 | 1.04 | 1.05 | 0.84 | 1.06 | 0.98 | 0.97 | P |
| Material B | 45% | 0.30 | 0.31 | 0.35 | 0.34 | 0.20 | 0.38 | 0.31 | P |
| Zone 3 | Coverage (%) | Sample 1 | Sample 2 | Sample 3 | Sample 4 | Sample 5 | Sample 6 | Average | |
| Material B | 100% | 0.30 | 0.31 | 0.35 | 0.34 | 0.20 | 0.38 | 0.32 | P |
| | | | | | | | | | |
| Zone 4 | Coverage (%) | Sample 1 | Sample 2 | Sample 3 | Sample 4 | Sample 5 | Sample 6 | Average | |
| Material B | 100% | 0.30 | 0.31 | 0.35 | 0.34 | 0.20 | 0.38 | 0.31 | P |
| | | | | | | | | | |

Details of materials used in jacket

| | |
|------------|---|
| Material A | Woven fabric shell, fabric layer and mesh inner liner |
| Material B | Woven fabric shell with mesh inner liner |

Burst Strength

These pants were tested for burst strength in accordance with MotoCAP test protocols. The diagram below illustrates the burst strength results in terms of the likely performance of the garment in an impact and is a pictorial representation of the data from the table below.



Burst Strength Performance

| | |
|--------------|------|
| Burst rating | 8/10 |
| Burst score | 837 |

| Determining Criteria | Unit | Good | Acceptable | Marginal | Poor |
|----------------------|-------|--------|------------|-----------|-------|
| Burst strength | (kPa) | > 1000 | 800 - 1000 | 500 - 799 | < 500 |

Individual Burst Strength Results: - The table below shows the burst pressure in kilopascals (kPA) for each sample tested by Zone and the average result for each zone.

Burst pressure for each seam (kPA)

| Area | Sample 1 | Sample 2 | Sample 3 | Sample 4 | Sample 5 | Sample 6 | Average | |
|-------------|----------|----------|----------|----------|----------|----------|---------|---|
| Zones 1 & 2 | 787 | 930 | 576 | 519 | 863 | 1062 | 790 | M |
| Zones 3 & 4 | 1291 | 1339 | 1129 | 769 | 956 | 678 | 1027 | G |

Impact Protection

These pants were tested for impact protection and coverage in accordance with MotoCAP test protocols. The diagram below is a visual indication of the likely performance of each impact protector calculated from the data in the table below. The colour coding is based on the worst performing score for average or maximum force for each impact zone. Areas shaded black are not considered for impact protection ratings.



Impact Protection Performance

Impact rating 6/10
Impact score 41.9

| Determining Criteria | Unit | Good | Acceptable | Marginal | Poor* |
|----------------------|------|------|------------|----------|-------|
| Impact force | (kN) | < 15 | 15 - 24 | 25 - 30 | > 30 |

* Poor may also indicate that no impact protector, or impact protector pocket is present in the garment

Impact Protector Results: - The table below shows the average and maximum force transmitted through each impact protector type in kilonewtons (kN) and their area of coverage as a proportion (%) of the Zone.

| Impact protector type | Knee | | Hip | |
|-------------------------------------|------|---|------|---|
| Average force (kN) | 17.7 | A | 18.3 | A |
| Maximum force (kN) | 27.1 | M | 23.2 | A |
| Coverage of Zone 1 area | 110% | | 100% | |
| Coverage of Zone after displacement | 100% | | 100% | |

Individual Impact Protector Results: - The table below shows the test results for each strike on individual impact protectors in kilonewtons (kN) and the position of the strike. Individual strike results are capped at a maximum of 50kN.

Force transfer for each impact strike (kN)

| Impact protector type | Knee | | | Hip | | |
|-----------------------|--------|------|------|--------|------|------|
| | Centre | Mid | Edge | Centre | Mid | Edge |
| Impact Protector 1 | 13.4 | 14.5 | 27.1 | 15.5 | 18.9 | 17.7 |
| Impact Protector 2 | 17.5 | 15.7 | 20.8 | 16.8 | 17.5 | 23.2 |
| Impact Protector 3 | 14.8 | 16.2 | 19.3 | 15.3 | 17.8 | 21.8 |

Breathability

These pants were tested for breathability following the MotoCAP test protocols. The table below shows the moisture vapour resistance and the thermal resistance values obtained.

| Without removable liners | | With water-resistant liner | |
|--------------------------|-------|----------------------------|-------|
| Breathability rating | ★★★ | Breathability rating | ★★★ |
| Breathability score | 0.477 | Breathability score | 0.440 |

| Moisture Vapour Resistance - R_{et} (kPa.m ² /W) | 1 | 2 | Average |
|---|-------|-------|---------|
| Without removable liners | 32.0 | 32.6 | 32.3 |
| With water-resistant liner | 27.7 | 26.8 | 27.2 |
| Thermal Resistance - R_{ct} (K.m ² /W) | 1 | 2 | Average |
| Without removable liners | 0.260 | 0.254 | 0.257 |
| With water-resistant liner | 0.201 | 0.199 | 0.200 |

Water spray and rain resistance

This pants are advertised as water-resistant, and so has been tested for water spray and rain resistance according to the MotoCAP test protocols. The table below shows the water absorbed (ml) and the wetting proportion (%) of the garment and undergarments due to water absorption.

| | Water absorbed by garment | | Water absorbed by underwear | |
|----------------|---------------------------|----------------|-----------------------------|----------------|
| | Volume (ml) | Percentage (%) | Volume (ml) | Percentage (%) |
| Pants 1 | 333 | 31% | 12 | 4.4% |
| Pants 2 | 178 | 16% | 5 | 1.9% |
| Average | 256 | 24% | 8 | 3.1% |

Location of wetting

There was no visible wetting to the cotton underwear for either pants tested.

Assessment Details.

| | |
|------------------------|--------------------------|
| Brand | BMW |
| Model | Rider Ladies |
| Type | Pants - Textile |
| Date purchased | 29 November 2019 |
| Tested by | AMCAF, Deakin University |
| Garment test reference | P19T13 |
| Rating first published | September 2020 |
| Rating updated | 4 September 2020 |